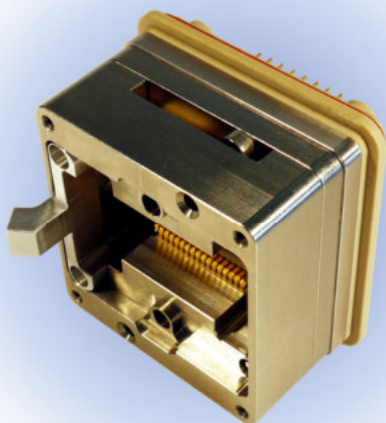


ecoAmp KELVIN CONTACTOR



Contactor for High Power Applications



RF



High End Digital



Automotive / Power



Precision Analog /
Sensors



Mobility

Benefits:

- Boosted first pass yield
- Enhanced production reliability
- Testing at full specification values
- Improved Overall Equipment Efficiency (OEE)
- Extended maintenance intervals
- Reduced cost of test

Key Features:

- Developed for highest current requirements
- Patented spring and tip geometry
- Optimized heat dissipation
- Contact motion decoupled from the test board
- Proven self-cleaning wipe
- Durable one piece design
- Low and stable contact resistance
- Extended temperature range
- Available for strip testing

ecoAmp KELVIN CONTACTOR

1. Packages and Applications

- 1.1 Packages
 - Leaded & leadless
 - SO, QFP, TO, DPAK, power modules
 - Minimum lead pitch 0.5 mm
- 1.2 Test Handlers
 - All handler types

2. Environmental

- 2.1 Temperature Range
 - -60 °C to +175 °C

3. Reliability

- 3.1 Contact Spring Lifespan¹
 - 1 Mio. + insertions

4. Electrical

- 4.1 Bandwidth
 - 0.35 GHz @ -1 dB (dual, GSG 0.5 mm pitch)
 - 0.8 GHz @ -1 dB (dual, GSG 1.27 mm pitch)
- 4.2 Loop Inductance
 - 2.3 nH (dual, GSG 0.5 mm pitch)
 - 4.5 nH (dual, GSG 1.27 mm pitch)
- 4.3 Typical Contact Resistance²
 - Hard gold coating: 30 mΩ
 - Forta: 30 mΩ
- 4.4 Current:
 - Maximum peak current: 160 A @ 1 % duty cycle³
 - Maximum continuous current: 8 A

5. Mechanical

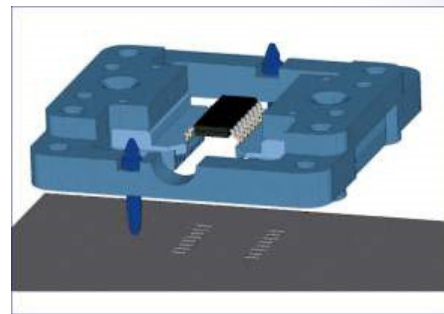
- 5.1 Contact Spring Type
 - Cantilever / single piece
- 5.2 Contact Spring Force
 - 1.3 N/pair – 3.2 N/pair (application dependent)
- 5.3 Standard Test Height
 - Application dependent

6. Materials

- 6.1 Contact Spring Material⁴
 - CuBe
- 6.2 Contact Spring Coating⁴
 - Hard gold coating
 - Dura
 - Forta

7. Configurations / Interface Options

- 7.1 Plunge to Board
 - Thermal insulation available



8. Technical Standards

- 8.1 Compliant to
 - ISO 9001 : 2000

¹Electrical resistance increase due to contamination not covered

²Typical resistance measured between Au plated sheets

³Based on 1 sec cycle time and 20°C temp. rise

⁴Other base materials and coatings on request

Cantilever Technology

The Cohu Cantilever products stand for highest performance at best Cost of Test. They ensure highest contact yield by highly precise contacting and a unique self-cleaning of the contact. The spring geometry offers a specific wipe which allows penetrating oxide and debris.

All performance figures such as MTBF, MTBA, Uptime, Yield, Jam Rate, Life Span, Cleaning Cycles etc. can vary with specific package type, test program and / or specific application environment. They assume that only original Cohu spare and consumable parts are used, recommended maintenance intervals and procedures are respected, operators/maintenance technicians have successfully participated in formal equipment training by Cohu to the appropriate level, and only Cohu approved software is used on the systems. Cohu assumes no warranty or liability if any of these requirements is not met. All listed data are for information only. For binding specification please contact your sales person.

